



Building THE INDUSTRY

Technology driven engineering for the
industrial and manufacturing industry



**Headoffice****Zurich | Switzerland**

Setcons Swiss AG
Sihlstrasse 73
CH-8001 Zürich

+41 728 281910
zurich@setcons.ch

Moscow | Russia

Setcons OOO
Staropetrovskiy Proezd 1A
125130 Moscow, Russia

+7 903 270 9858
moscow@setcons.ch

Berlin | Germany

Setcons GmbH
Schönhauser Allee 43A
D-10435 Berlin

+40 30 208 488 40
berlin@setcons.ch

Cairo | Egypt

Setcons Egypt LLC
G6, Business Building,
Katameya Heights,

+20 100 179 6255
Cairo@setcons.com

ABOUT US

Setcons is an Engineering, Architectural Design, and Software Development Company.

We are experts for highly standardized prefabricated and modularised construction projects.

For more than 20 years we have been supporting manufacturing companies to expand to new markets and design and operate complex production facilities.





OUR COMPETITIVE ADVANTAGES

The combination of an outstanding engineering team, strong local expertise and our in-house built IoT platform.



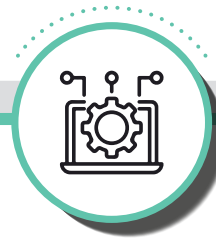
ENGINEERING TEAM

A team of architects, civil, mechanical, electrical engineers, and software engineers, which have successfully completed dozens of complex industrial and manufacturing projects.



LOCAL EXPERTISE

We are experts for complex projects in the Middle East / North Africa and Europe & Russia, with a deep understanding of each market we are operating in.



IOT PLATFORM

Over the last 10 years we have developed an outstanding IoT platform. Our platform is a solution for the entire life cycle of real estate, industrial and manufacturing facilities, machinery.





VISION

To become the market leader in the field of industrial buildings construction sector and the most trusted company by our customers.



MISSION

To design, build and deliver turnkey, high-quality, cost-effective construction projects on time as per project schedule and exceeding our clients' expectations, while providing high level of satisfaction employment and career growth opportunities for our team members in Setcons.



VALUES

Teamwork

working together as Setcons family.

Responsibility

taking ownership of the task in hand.

Understanding

knowing our business and our clients' business Standards – acting ethically whilst exceeding the brief.

Tenacity

approaching challenges through innovative solutions.

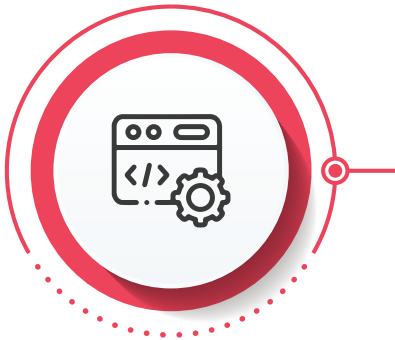


SERVICES



Construction

We have been active in the construction industry for more than 20 years helping well-known international clients to design, build and operate new industrial, commercial and residential buildings.



Software development

Digitalization and information technology are rapidly changing the world and our approach for design and execution of construction projects. At setcons we develop our own IoT platform to assist and digitalize the entire value of construction chain.



Digital transformation

Next to our own software development, we help our clients to digitalize their buildings and manufacturing processes itself.



Our Team Commitment to Quality

Setcons is ISO 9001:2015 certified and complied with the international Standards and National Regulations. We are committed to listen to our Customer voice to ensure their satisfaction, meet and exceed their expectation to gain their loyalty.



ENGINEERING TEAM

Our engineering teams from **Switzerland, Germany and the Middle East** are in charge for the entire project planning and execution. Starting from the design of the factory layout to hiring and training all key personnel.



Design of a flexible manufacturing system (FMS), which can be easily adapted to new products and changing requirements



Design, planning and engineering of all production facilities and office buildings.



Turn-key construction of the industrial factories.



Hiring, on-boarding, and training of all local employees.



Certification of the factory under ISO 9001, ISO 13485, MDR and other QMS.



OUR IN-HOUSE BUILT IOT PLATFORM

is the result of whole team experience in the construction and engineering business

- We have been developing Europeans leading IoT platform for the construction industry.
- local construction teams supported by our software engineering team.
- Our digital approach to complex construction projects guarantees project success and mitigates common construction pitfalls and project delays.



OUR PROJECTS

We are the trusted partner for large construction projects and digital transformation processes.

SOME PROJECTS OF OURS

- Energy-park ULY Energy Solutions | **Russia**
- Production plants Knorr Bremse | **Europe**
- Medical Factory AOI | **Egypt**
- Metal Casting Foundry Nemak | **Russia**

SELECTED PROJECTS

Production plant for DMG MORI | Russia

Setcons assisted DMG MORI with its expansion to the CIS region by taking care of the entire planning and construction process. Since its completion, Setcons is operating the entire facility with its IoT platform.

Office building and showroom for DMG MORI | Russia

New office for employees was built in Moscow. It includes showroom for presentation of machines produced by DMG MORI. Setcons is operating the entire facility with its IoT platform.

Office & service facilities Liebherr | Saudi Arabia

Liebherr has been working with Setcons for more than 15 years, implementing together projects in Europe, Russia and the Middle East.

Other industrial projects in Dubai, were executed through the co-operation with our partners on site.





Medical Factory for Sarstedt | Russia

We assisted Sarstedt with their expansion plans to the CIS region. Together with Sarstedt's management we evaluated the right location for Sarstedt's new plant, assisted along the entire design, planning and construction process. The result has been a state-of-the-art production plant for medical devices and disposable materials.

SELECTED CLIENTS

LIEBHERR

STRABAG

DMG MORI



SCHAEFFLER



Quarzwerte

JUNGHEINRICH



ON GOING PROJECTS

1. Building a new manufacturing plant for DMG MORI in Russia.

DMG MORI is a worldwide leading manufacturer of machine tools with sales revenues of more than € 4billion and around 7,200 employees.



**BUILDING
A NEW
MANUFACTURING**



DMG MORI has been successfully working with Setcons for years to expand its business to new markets .

The company is one of the world's leading manufacturers of cutting machine tools such as turning and milling machines.

The company operates 21 production sites worldwide. DMG Mori machines are used across various industries from aerospace, automotive to medical equipment. DMG MORI has been operating production facilities throughout the globe in the United States, Europe and Asia. Together with the client we evaluated the potential to strengthen the company's position in the CCE region through the establishment of a production facility in Russia. Producing locally and thereby strengthening the company's local market presence displays both tremendous business opportunities and risks. The client has, therefore, asked us to evaluate all core operational risks of building a new production plant in Russia. Setcons assisted DMG MORI along the entire process of identifying the right location in Russia, planning and executing the construction of the new facilities, up to operating the plant together with DMG MORI in Russia.

The result has been a state-of-the-art production facility, which has been completed on time and budget. The new plant allows DMG MORI to better serve the CCE region, strengthening both the distribution and marketing of CNC machines as well as to improve local service levels.

The main success factor in completing the project on time has been the application of our document management system Setcons to assist the localization, adoption and construction of DMG's manufacturing processes in Russia.

Furthermore, digitising the entire planning and construction process helped DMG MORI to guarantee a smooth transition into the operational launch of the plant as well as its future maintenance.



2. The majority of medical technology is still being imported into the Middle East and North Africa. The MENA region is home to more than 570m people and of the fastest growing healthcare and med-tech markets.

Together with a consortium of European medical technology companies and the Arab Organisation of Industrialization (AOI), we have been developing the first production facility for medical devices in North Africa. Our client's goal is to substantially improve medical care in the region, lower dependencies on foreign imports of critical medical devices and to foster medical innovation in the MENA region through unique technology transfer.





The engineering and construction (E&C) industry is at the cusp of a new era.

Technology start-ups are creating new applications and tools that are changing how companies design, plan, and execute projects. By providing advanced construction-focused software, with analytics capabilities, these innovative start-ups are eliminating many of the problems that have dogged the E&C sector for decades, including difficulties compiling and sharing project information. Such improvements could not come at a better time, since construction projects are becoming increasingly complex and expensive, putting managers under greater pressure to improve costs, timelines, and efficiency.

Many E&C companies started to implement new construction technologies into their daily activities.

AIRdBASE is an IoT solution for the entire life cycle of real estate, plant and machinery

No need to possess any programming knowledge. For using our Digital solutions.

We are looking for partners among engineering and architecture companies, business consultants and freelancers.

